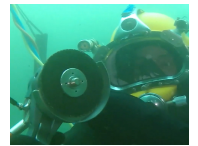


Gasoline High Pressure Unit

30 LPM @ 290 bar

The gasoline engine driven HDE290_30 high pressure unit is designed to drive underwater tools or remove marine life and instable coatings with 290 bar cavitation cleaning. The solid, stand-alone, 4 wheeled cart has a gasoline engine and is compatible with the CW300, CW350, SR450, SR600, all ROV lances and all underwater tools.



Specifications

Compatible with: CW300, CW350, CW202ROV, CW303ROV, SR450, SR600, All Underwater Tools

Max. Pressure: 290 bar (4,206 psi)

Max. flow: 30 LPM (7.9 GPM)

Power: 22HP Honda gasoline engine

Weight: 150kg (330 lbs)

Dimensions: 100x82x85cm
(39.4x32.3x33.5")

Features

- Removes medium fouling, debris, corrosion and instable coatings
- Drives all underwater tools
- Electric start
- Heavy duty, 4 wheeled cart
- Manual pressure valve
- Readily serviceable water filter
- Automatic decelerator to reduce RPM in the bypass phase
- No engine-oil safety device
- Motor thermal protection
- Hour counter